



RM[™]easiteach[™]
NEXT GENERATION

Installation Guide

Contents

Installation Options	3
Installing RM™ Easiteach™ Next Generation	4
Installing the Corbis Multimedia Asset Pack	10
Installing the Text to speech voices	12
Uninstalling RM™ Easiteach™ Next Generation	16
Technical requirements.....	17
Support	18

Installation options

DVD installation

Insert the RM™ Easiteach™ Next Generation DVD into the DVD drive and the install program will automatically start.

If the installer does not auto-start, open 'My Computer' and navigate to the drive which contains the DVD. Open the drive and double click on setup.exe. Then follow the instructions below, starting with the section 'Installing RM Easiteach Next Generation'

Website download

You can download and install the latest version of Easiteach from the Easilearn website (www.easilearn.com).

Once the application starts installing, follow the instructions below, starting with the section 'Installing RM Easiteach Next Generation'.

Installing RM™ Easiteach™ Next Generation

(Version 1.5.0)

If you do not have all the pre-requisites required installed, you may be prompted to install one or more of the following applications:

- Microsoft® .Net Framework 4 Client Profile
- Microsoft® Visual C++ 2010 Redistributable (10.0.40219.01)
- Microsoft® Windows® Image Acquisition Library Automation Layer (Windows® XP)
- Adobe® Flash Player v11.2 for non-Internet Explorer® browsers
- K-Lite codec pack basic (9.1.0)
- Windows® Media Player 11 or above (Windows® XP)
- Windows® Media 9 Codec (Windows® XP)
- OGG Video / Audio Codec (Windows® XP)
- Microsoft® DirectX 9 (Windows® XP)

Follow the installation instructions provided on screen.

Language select

Select a language.



Install

Select Install Now or Custom Installation.



Custom installation

If Custom Installation is selected, tick the options you would like to install.



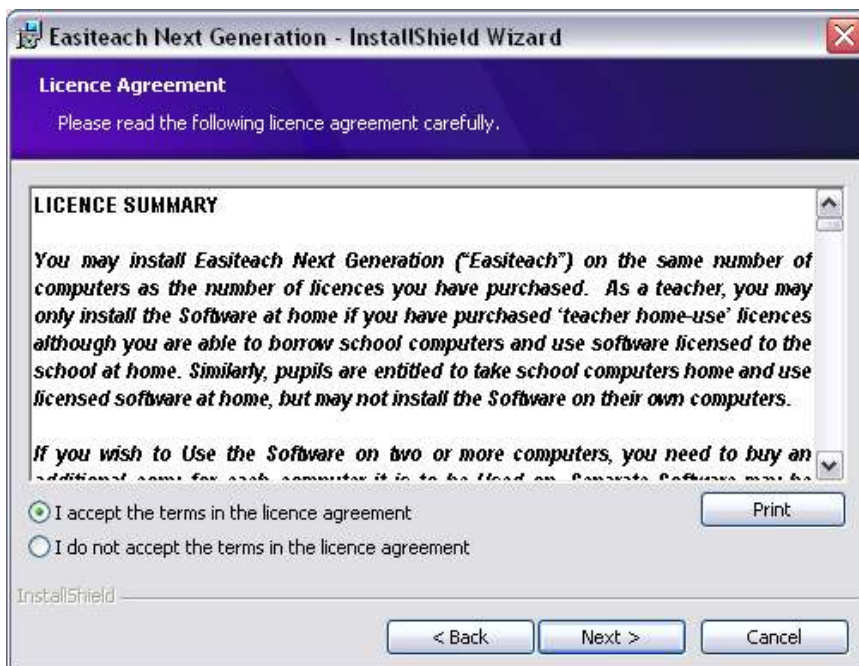
Welcome to the InstallShield Wizard for Easiteach Next Generation

Click Next to proceed.



Licence Agreement

Please read the licence summary and select 'I accept the terms in the licence agreement'.



Default page size

In order to ensure that RM™ Easiteach™ Next Generation displays at the optimum size for your computer, projector or interactive whiteboard it is important to choose a default page size. Select the default page size you wish to use from the drop down menu.



Default download centre locale

In order to display the results most relevant to your location in the download centre it is important to choose a default locale. Select your default locale from the drop down menu.



Custom Setup

The Custom Setup window will display.

- Ensure the features you require are installed by clicking on the item and selecting the tick;
- Click Next to continue.

Please note, the Feature Description indicates how much space is required on your hard drive for each feature.



If you wish to change where RM™ Easiteach™ Next Generation is installed, select Change and enter a new location in the relevant field in the Change Current Destination Folder.

Ready to Install the Program

- Click Install to proceed.



InstallShield Wizard Completed

- Click Finish to complete the install of RM™ Easiteach™ Next Generation.



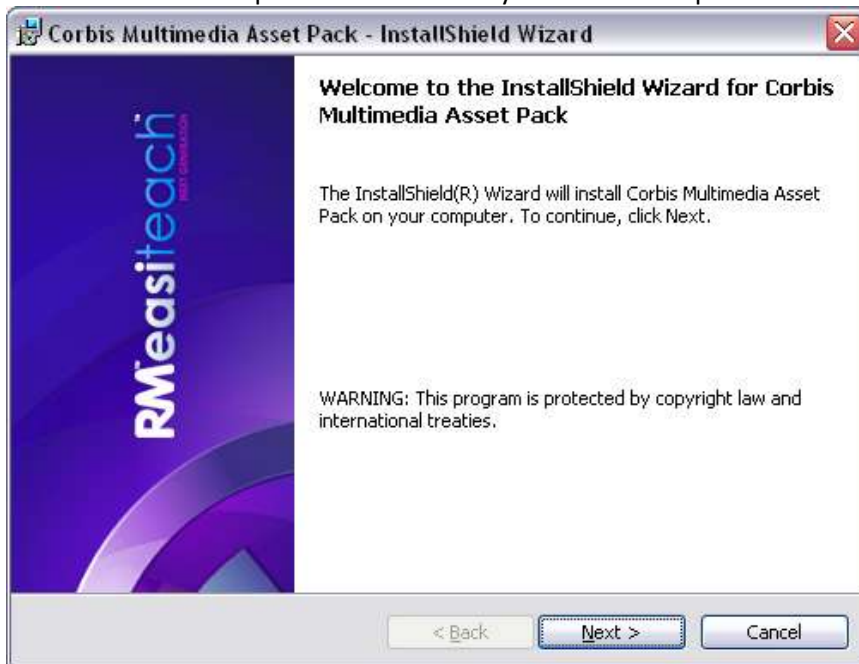
Easiteach will have installed with a shortcut on your desktop and is also available to open by navigating to Start > All Programs > Easiteach Next Generation.

Installing the Corbis multimedia asset pack

RM™ Easiteach™ Next Generation comes with a range of assets including images and photos. These assets are installed separately by following the instructions below.

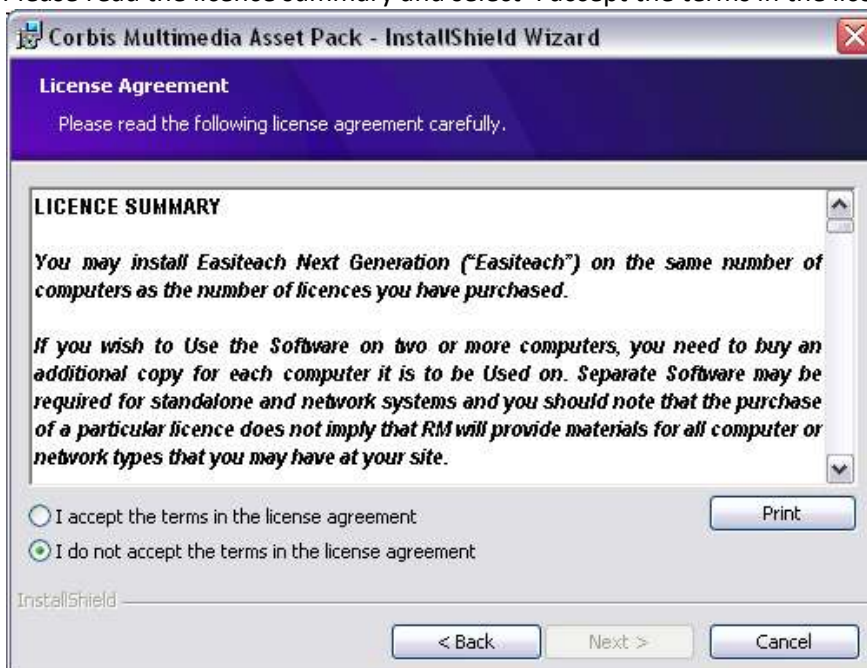
Welcome to the InstallShield Wizard for Corbis Multimedia Asset Pack

- Click Next to proceed or Cancel if you wish to complete the installation at a later date.



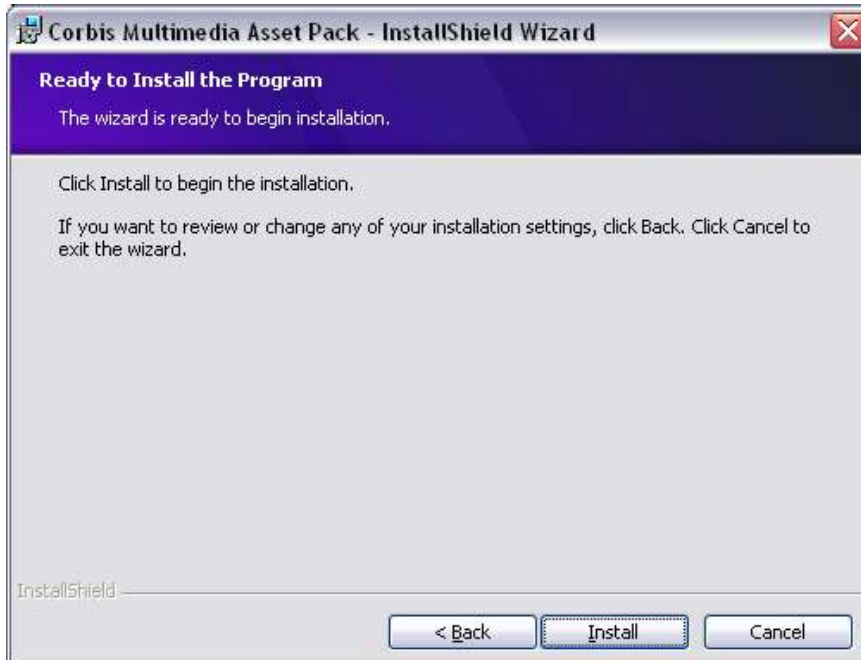
Licence Agreement (Corbis Multimedia Asset Pack)

Please read the licence summary and select 'I accept the terms in the licence agreement'.



Ready to Install the Program (Corbis Multimedia Asset Pack)

- Click Install to proceed.



InstallShield Wizard Completed

- Click Finish to complete the install of the Corbis multimedia asset pack.



Installing the text to speech voices

RM™ Easiteach™ Next Generation comes with a wide variety of voices for use in the text to speech functionality. These voices are installed separately by following the instructions below.

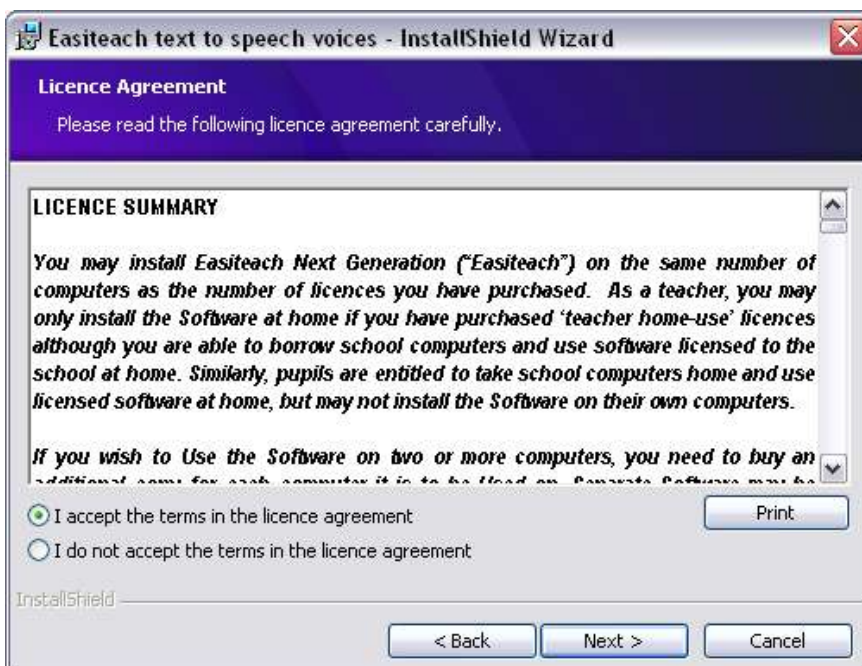
Welcome to the InstallShield Wizard for Text to speech voices installer

Click Next to proceed or Cancel if you wish to complete the installation at a later date.



Licence Agreement (Text to speech voices installer)

Please read the licence summary and select 'I accept the terms in the licence agreement'.



Custom Setup (Text to speech voices installer)

The Custom Setup window will display. You can choose to install up to 2 voices.



- Click on the button beside each language you require and select the appropriate option.
- Click Next to continue.

The Feature Description indicates how much space is required on your hard drive for each feature.

Ready to Install the Program (text to speech voices installer)

- Click Install to proceed.



InstallShield Wizard Completed

- Click Finish to complete the install of the text to speech voices.



The installation is now complete. Click OK.



Restart

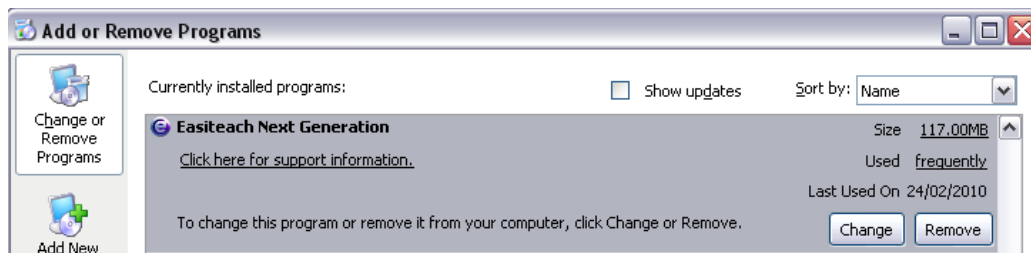
Once you have completed the installation you may be prompted to restart your computer. If you are prompted to do so, restart your computer before attempting to use Easiteach.



Uninstalling RM™ Easiteach™ Next Generation

To uninstall the application navigate to the Start menu > Control Panel. Select the Add or Remove Programs option.

- Within the Add or Remove Programs window, select Easiteach Next Generation, so it is highlighted. When highlighted two buttons will display, Change and Remove.



- Click Remove. A confirmation message will display.



- Select OK.

Several different messages will display, confirming that the removal is taking place and the time to complete this. Once it has uninstalled, Easiteach Next Generation will no longer be present in the Add or Remove Programs display. Please note, this may take some time as there are a considerable amount of assets to remove.

Technical requirements

The minimum and recommended hardware and software required to use RM™ Easiteach™ Next Generation are:

	Minimum	Recommended
Operating System	Standalone computers using Windows® XP SP3 (32 Bit), Windows Vista™ SP2 (32 or 64 Bit), Windows® 7 (32 or 64 Bit) or Windows® 8 (32 or 64 Bit) Mac OS 10.6.8, 10.7.2(Intel)	Standalone computers using Windows® 7 (32 or 64 Bit) or Windows® 8 (32 or 64 Bit)
Processor	Windows: 1.8GHz+ Mac: 2GHz+	Windows: 2.5GHz+ Mac: 3.06 GHz+
Memory	Windows: 512MB Mac: 2GB	Windows: 1GB Mac: 4GB
Storage	Windows: 500MB Mac: 10GB	Windows: 1GB Mac: 10GB
Graphics card	64MB	256MB
Screen	1024x768	1024x768 or above

The following prerequisites are required for Windows®:

Microsoft® .Net Framework 4 Client Profile
 Microsoft® Visual C++ 2010 Redistributable (version 10.0.40219.01)
 Adobe® Flash Player v11.2 for non-Internet Explorer® browsers
 K-Lite codec pack basic (version 9.1.0)
 Windows® Media Player 11 or above (Windows® XP)
 Windows Media 9 Codec (Windows® XP)
 OGG Video / Audio Codec (Windows® XP)
 Microsoft® Windows® Image Acquisition Library Automation Layer (Windows® XP)
 Microsoft® DirectX 9 (Windows® XP)

The following prerequisites are required for Mac:

XiphQT(decoders).component v 0.1.9
 XiphQT.component v 0.1.9
 ffmpeg2theora v 0.27
 Adobe® Flash Player v 11
 Flip4Mac

Support

If you require support using RM Easiteach Next Generation, look through this guide to see if it provides an answer to your query. This guide can also be accessed from the 'e' menu, by selecting the 'Help' option. For further help and technical support, you can visit the RM Easiteach website or contact Support.

To get online help, visit www.easiteach.com/support. The website provides information in a variety of languages.

UK support

Telephone support is available on 0845 404 0000 between 8:00 am to 6:00 pm Monday to Friday. Alternatively, visit www.rm.com/support/, where you can search the knowledge library or log a support call.

For some areas, we have in-country support arrangements. Please visit www.easiteach.com/support for details.

Alternatively, contact the company that supplied RM Easiteach.

Easiteach is a trademark of RM Education Ltd in the UK.

Copyright © RM Education Ltd 2013. All rights reserved.